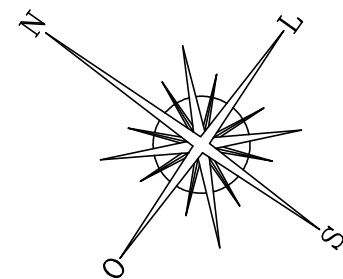


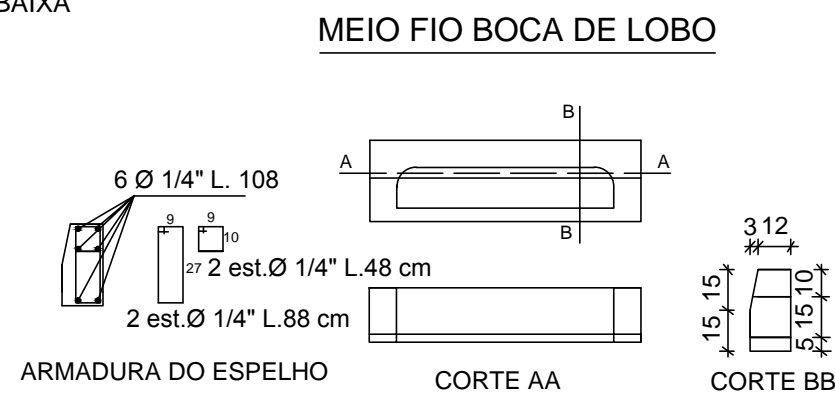
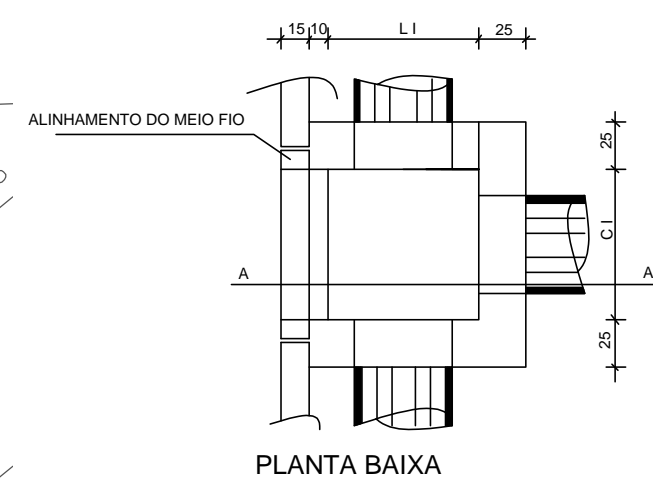
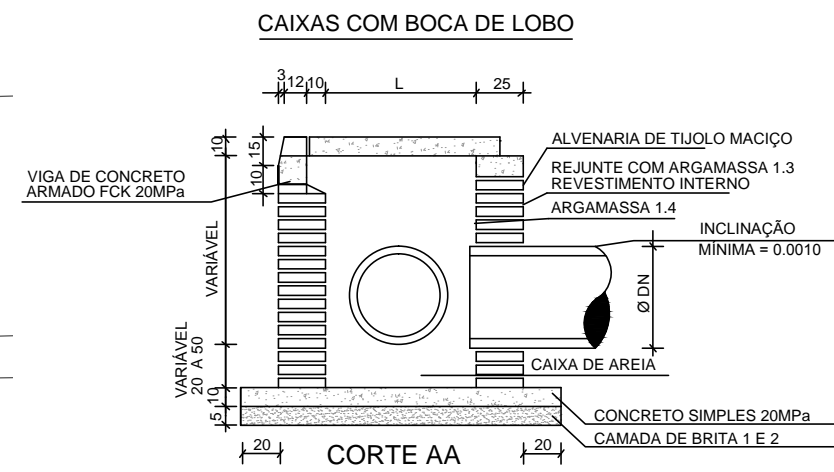
01 MICROBACIAS
ESCALA: 1/2500



ÁREA	
Microbacia 01	3,80 hec
Microbacia 02	2,71 hec

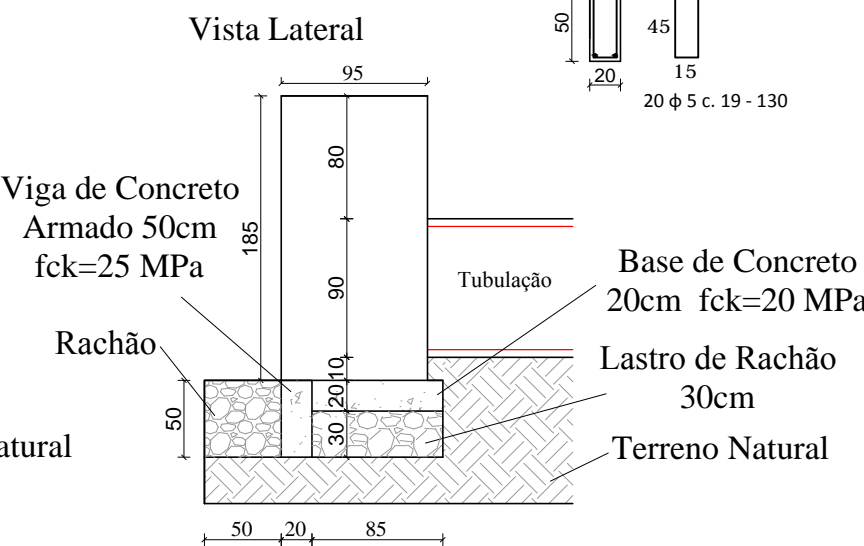
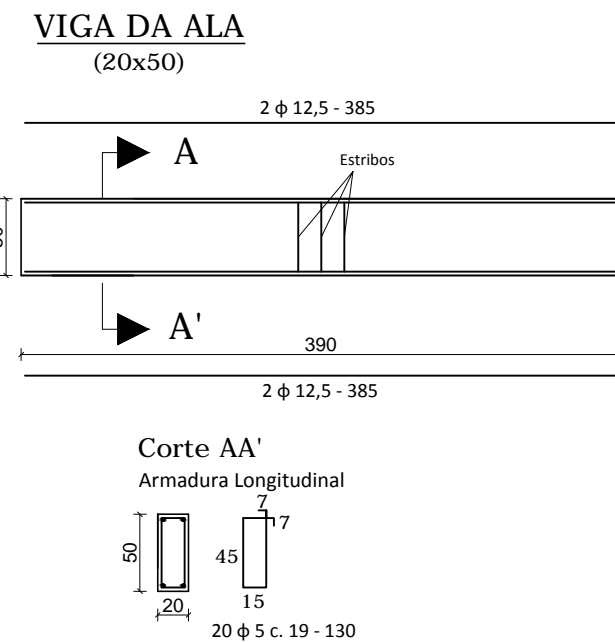
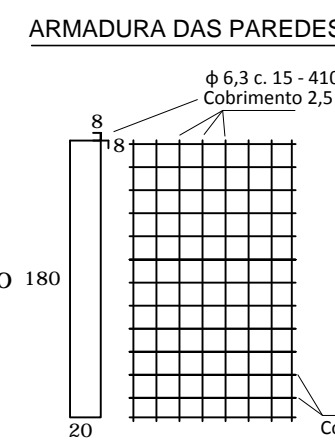
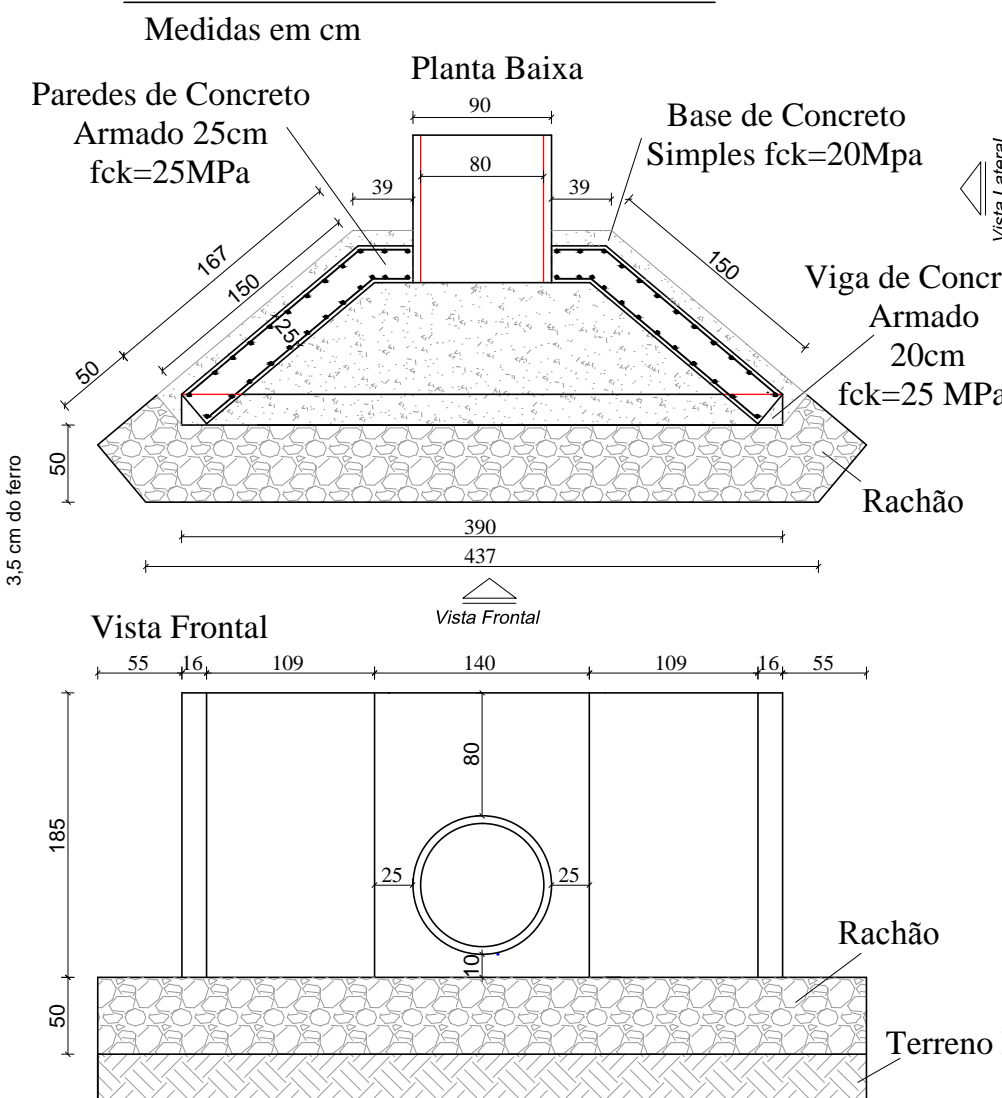


02 DETALHES
Sem Escala

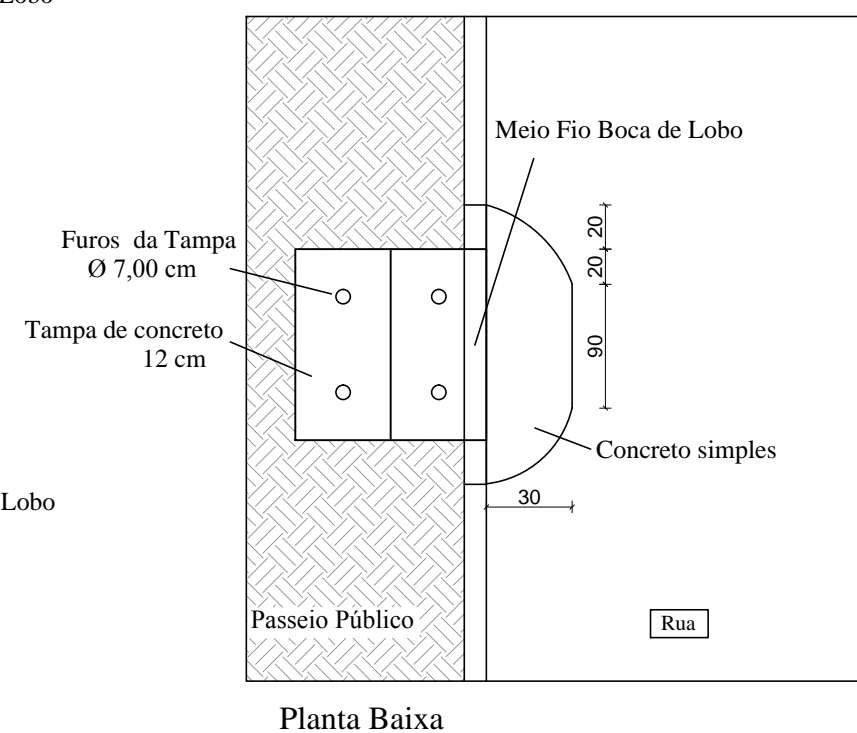
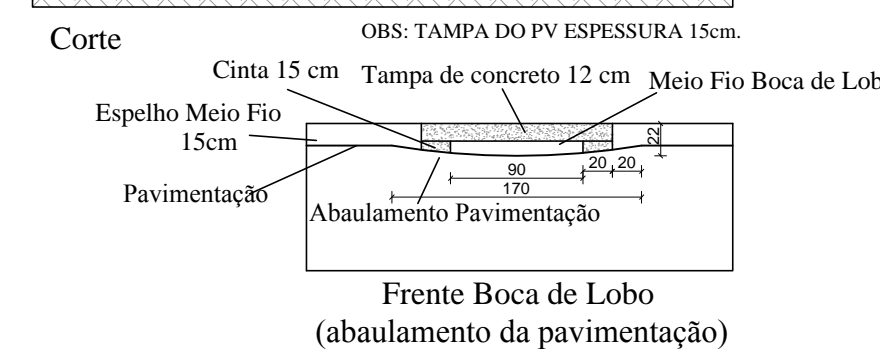
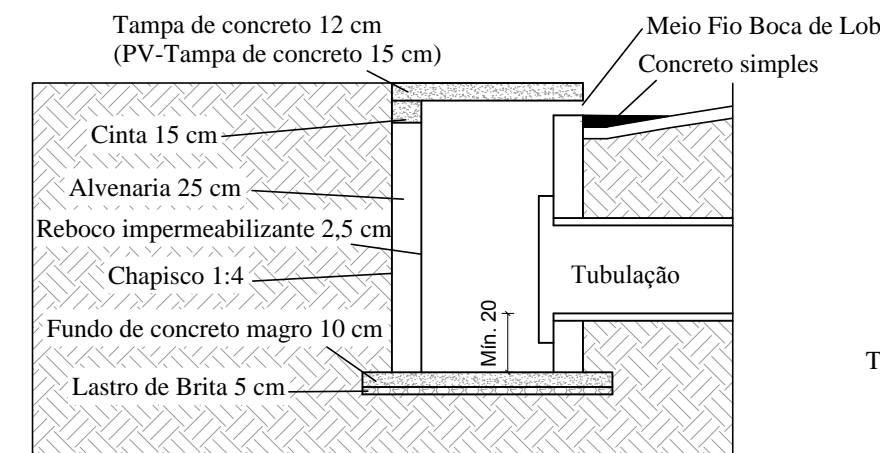


TIPO	DN cm	DIMENSÕES TAMPA		DIMENSÕES INTERNAS DA CAIXA		ESPESSURA DA BASE b (m)	DIMENSÕES DO FERRO 1/4"		Nº E ESPAÇAMENTO FERRO 1/4"	
		L (m)	C (m)	L I (m)	C I (m)		POS I	POS II	POS I	POS II
B1	Ø 40	1,05	1,10	0,80	0,80	0,10	1,02	1,07	7C. 15	7C. 15
B2	Ø 60	1,30	1,10	1,00	0,80	0,10	1,27	1,07	8C. 15	7C. 15
B3	Ø 80 e/ou Ø 90	2x0,85	1,10	1,40	0,80	0,15	0,82	1,07	5C. 15	7C. 15

DETALHE DA ALA DE CONCRETO



DETALHE DAS CAIXAS COM BOCA DE LOBO



PREFEITURA MUNICIPAL DO RIO GRANDE
Gabinete de Programas e Projetos Especiais - GPPE

Obra/Local: Projeto de Pavimentação e Drenagem Rua Inspetor Azevedo			
Especificação: Planta de Detalhes			
Equipe de Projeto: Engª Civil Suzel Magali Leite, CREA-RS: 39323 Engª Civil Bárbara Lothamer Peixe, CREA-RS: 202828			
Coordenação de Projetos: Engª Civil Suzel Magali Leite, CREA-RS: 39323			
Chefe de Gabinete GPPE: Darlene Pereira Torrada			
Desenho: Bárbara Peixe	Data: Julho/2019	Escala: Indicada	Prancha: 05/05